



**Welcome to  
the  
Gladstone  
Community  
Forum  
2018**



# What I've learned about Gladstone

- The Gladstone teachers are passionate about their school community!
- Many Gladstone teachers' children go to or went to Gladstone!
- Our Gladstone teachers are some of the most innovative, dedicated, and effective teachers I have ever worked with!
- Many of our classified staff members have been here for many years and had children or grandchildren who went to Gladstone.
- Many of these same staff members stay even when their children move on to the next school.
- Many of our parents and grandparents were also students at Gladstone – Our legacy families!
- Gladstone is clearly loved by staff, parents, and the broader community that surrounds us.



Things  
that will  
not change  
now or in  
the near  
future

- Our amazing staff!
- The district office and BUSD Board's affection for Gladstone!
- The dedication of staff, administration, parents, and community to maintaining a positive school culture!
- The open feel of the Gladstone Campus- there are no current plans to add gates or fencing to our campus.



# A few clarifications

These are a few rules from the handbook that have not changed:

- The cafeteria is open and serving breakfast at 7:30am.
- For Breakfast: You can drop your child off in the Gladstone front lot (prior to the buses arriving) or walk them from the Shellman Gate anytime after 7:30am.
- The Gladstone front lot closes to drop offs when the buses arrive (approximately 7:50am).
- The rest of the campus opens at 7:50am when teacher supervision begins. The bell rings at that time & gates open.
- The church parking lot is available for parking if you are walking your child to the Shellman Gate.
- By city ordinance, there is no parking in the red zones – the local Sheriff has been writing citations



# A few clarifications

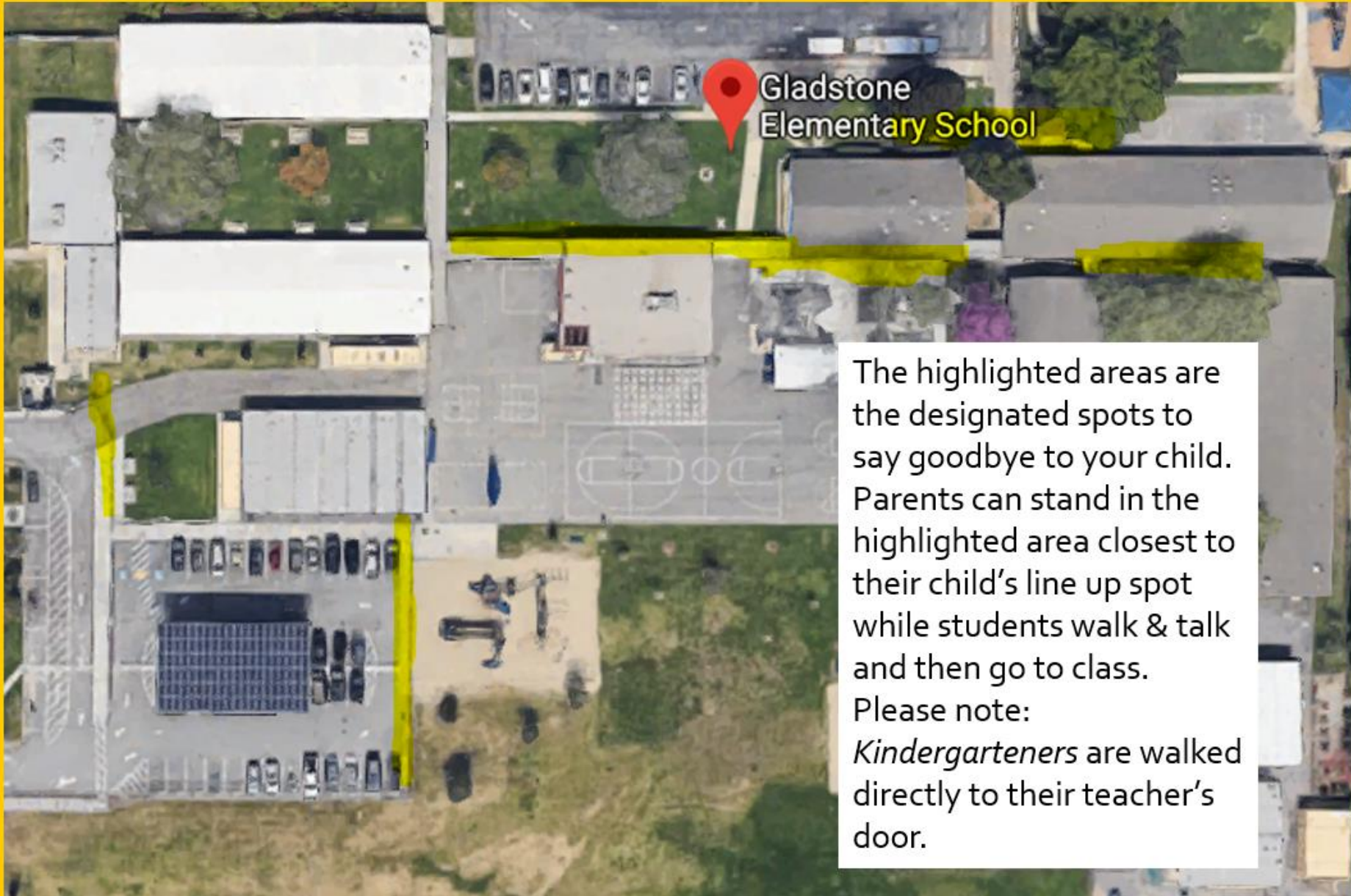
The following are changes that have been made:

- Parents say goodbye at the gate (on Shellman), by the daycare parking gate, or the area between the cafeteria and lunch shelters.
- Parents are welcomed to watch their students from any of those spots walk to their classrooms (there are many spots on campus where you can see the students walk to class- see next slide).
- The students drop off their backpacks on their line-up spots marked by their room numbers.
- Students can walk and talk with their friends until the 8am bell rings – at that time they walk to their lines.
- Teachers walk their students to the classroom.

**Kindergarten:** The teachers have asked to have parents walk them through the entry gate to the inside quad doors at the 7:50 bell – please wait outside the front gate until it rings.

**ASD and ASDI Classes:** Please follow the procedures outlined by the teachers in these classes.

Parents who check into the office and get a visitor's badge are allowed to proceed to the teacher's classroom if they are expecting you. If you have a meeting please check in at the office for a badge.



Gladstone  
Elementary School

The highlighted areas are the designated spots to say goodbye to your child. Parents can stand in the highlighted area closest to their child's line up spot while students walk & talk and then go to class. Please note: *Kindergarteners* are walked directly to their teacher's door.



Some new  
community  
traditions!

Please join us for some new traditions:  
Monday Morning Patriotic Assembly for 1<sup>st</sup> –  
5<sup>th</sup> grade students

Every Monday Morning at 8:00am

This will include:

- Flag Salute
- Patriotic Song
- Student Council and Weekly Announcements

AND

Family Reading Night

Every 1<sup>st</sup> and 3<sup>rd</sup> Wednesday 4:30 – 6:30pm



# Safety and Traffic Flow

- \* Blue lines: Traffic flow
- \* Yellow parallel line: possible crosswalk location
- \* Red x's: Proposed Parent volunteer and staff locations during AM drop off







# Volunteers?

**We need parents for the following:**

- **Greet students at Shellman Gate – see Mrs. Daniels (or email)**
- **Join a Safety & Traffic Committee to continue what we start here tonight**
- **Join me for coffee and carbs (or no carbs) once a month to ask questions and offer ideas**
- **Call, email, or come by anytime you have a question or concern.**



There had been a question about recess and lunch playtime: Are students allowed to play soccer and football?

Answer: Yes, in the designated areas. The students have really enjoyed these games!